

# MED TWIST LR 200

Louvre Roof Systems



////////// Sophisticated louvre roof system for all weather conditions



Outdoor Blinds and Awnings Australia is proud to introduce an innovative all-aluminum structure that seamlessly enhances both outdoor and indoor spaces, the **Med Twist LR 200**. This stylish bioclimatic pergola eliminates the distinction between inside and outside with its elegant, seamless and clean design. Experience year-round outdoor living through the 135-degree rotating blades, allowing for natural air circulation and shade control. The structure provides complete protection and can be customised with various finishes, accessories, and automated features - managed by a convenient remote control.



# Med Twist LR 200

## Louvre Roof Systems

### Ready for any weather

With its elegant and minimalist design, the motorised louvre roof system is constructed with extruded aluminium louvre blades that can be adjusted up to a 135° angle with a push of a button. The blades' flexibility ensures total user control over the degree of shade, UV protection and air circulation.

## Features



**INCLINING ALUMINIUM LOUVRE BLADES**  
Up to 135° opening angle

**CONSTRUCTION**  
Powder Coated Extruded Aluminium

**COUPLED MODULAR SYSTEM**  
Up to 10 modules can be connected seamlessly in width and length

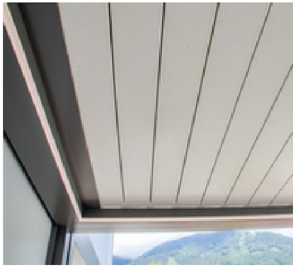
**SYSTEM SIZE**  
Width: min 2m - max 4.6m  
Depth: min 2m - max 6m

**INSTALLATION**  
Free-standing, wall and/or ceiling mountables

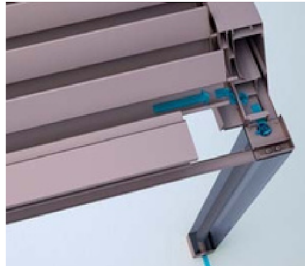
**OPERATION OPTIONS**  
Motorised

## Options and Features

### OPTIONAL LED LIGHTENING



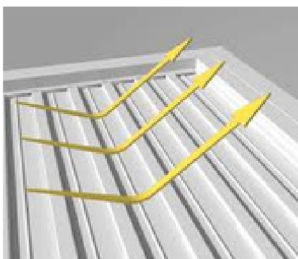
### OPTIONAL INTEGRATED GUTTER SYSTEM



### COUPLED SYSTEM UP TO 10 MODULES



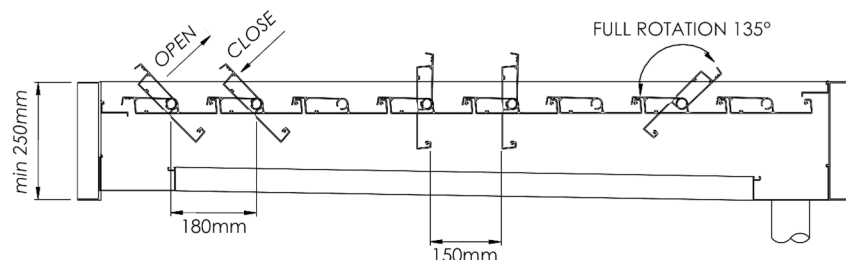
### PROTECTION AGAINST SUNLIGHT AND UV



### AIRFLOW ADJUSTMENT FOR BETTER VENTILATION



### WATERPROOF AND WATERTIGHT



### CUSTOM MADE

Each Med Twist LR 200 Louvre Roof System is custom made specifically to suite your project. Choose from over 100 premium Dulux and Interpon powder-coating colours to further customise your outdoor pergola.

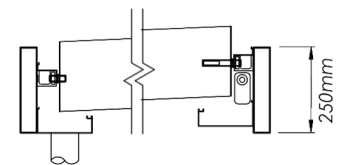
### AUTOMATION

Operation can be utilised through a **remote control** or by a hardwired **wall switch panel**. A wide range of **Automation sensors** such as wind or wind/sun sensors can be easily integrated with **Smart Home Automation Systems** for convenient voice control commands.

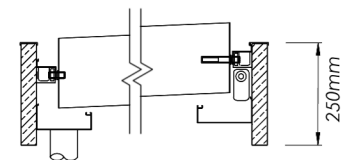


### SUPPORT FRAME OPTIONS

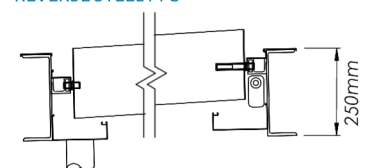
#### TYPE 1 ALUMINIUM FRAME



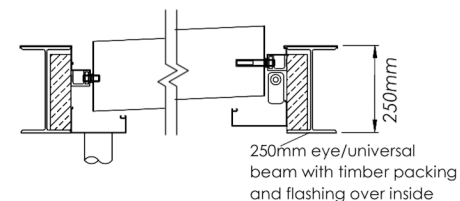
#### TYPE 2 TIMBER FRAME



#### TYPE 3 REVERSE STEEL PFC



#### TYPE 4 CLADDED UNIVERSAL BEAM



#### TYPE 5 MASONRY REVEAL/FRAME

