



# CUBEBOX

## FOLDING ARM AWNING

### FULL-CASSETTE

A fusion of strength, elegance, and precision engineering, available exclusively through Outdoor Blinds and Awnings Australia. Crafted with European technology, this compact full-cassette awning blends seamlessly into modern architectural styles, offering a discreet yet **powerful shading solution** for both residential and commercial spaces.

Designed for performance, the **fully enclosed cassette** protects the fabric and operating mechanism from dirt, rain, and humidity, ensuring long-lasting durability. Its **low-depth profile**, slim arms, and heavy-duty tilting points deliver **superior strength and reliability**, while the extensive range of premium fabrics allows you to customise for both style and function. Fully motorised for effortless operation, the Cubebox sets a new benchmark in shading — combining sleek design, robust protection, and contemporary performance.

# CUBEBOX FOLDING ARM AWNING

## OPTIONS AND FEATURES

Superior design -  
uncompromised performance



### CUSTOM MADE

Choice of premium Dulux and Interpon powder-coating colours for the frame as well as over 200 variations of premium quality of 100% solution dyed acrylic and mesh fabrics.



### ENERGY SAVING

Manufactured with the state-of-the-art fabrics from leading providers such as Serge Ferrari and Dickson. The fabrics are able to reduce glare and heat by up to 70% which in turn eliminates the greenhouse effect, keeps your interiors feeling fresh and, depending on the colour of the fabric, block 90% to 100% of UV rays.



### COMFORT, AESTHETICS & EASE OF USE

Offers superb sun and light rain protection with seamless integration.



### SYDNEY MANUFACTURED

Locally made to ensure quality every step of the way



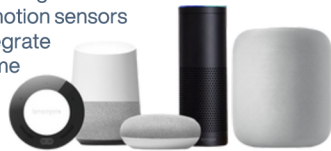
### OPERATION OPTIONS

Crank or Motorised.  
Manual gear box mechanism available up to 5000mm



### AUTOMATION OPTIONS

Available automation options include hardwire to a wall switch panel or a remote control; wide range of Automation sensors such as wind or wind/sun sensors, motion sensors and rain sensors that easily integrate with existing or new Smart Home Automation Systems for convenient voice control commands.



### CONSTRUCTION

Heavy duty arms with triple springs and poly-coated dual stainless steel cables



### SYSTEM SIZE

Up to 7m wide with no joints. Up to 4m projection



### AWNING ARM INCLINATION

Adjustable between 5° and 35° degrees. 18 degrees or more is recommended to achieve best possible light rain protection.



### INSTALLATION

Face, Recess, Up, Fascia Rafter, Roof Mount, Custom Solutions

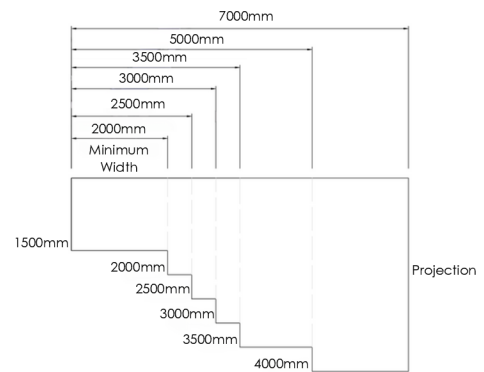


### FASTENERS

Marine Grade 316 Stainless Steel Bolts, Nuts & Screws



### HEAD BOX SIZES & SIZE LIMITS



### LED ARM LIGHTS (OPTIONAL)

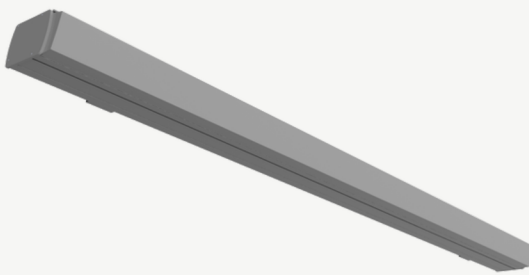
To enhance outdoor space after dark.



## CUBEBOX DIFFERENCE

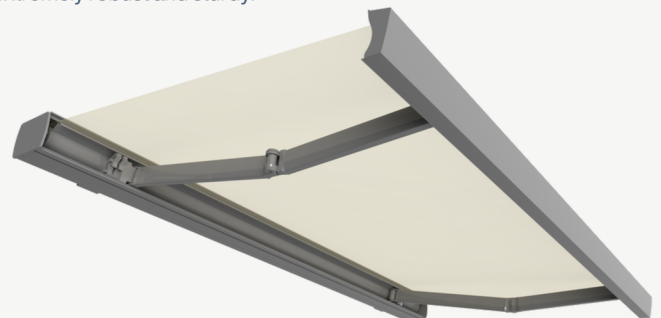
### FULLY SEALED CASSETTE

Protects the operating mechanism and fabric from the elements.

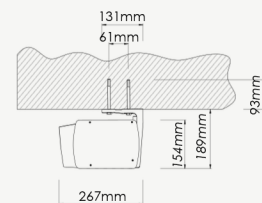
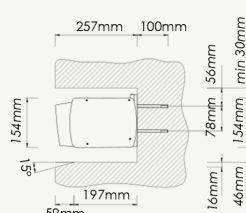
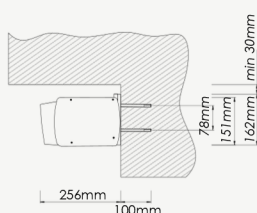


### ALUMINIUM BACK PLATE

The heavy duty plate is the back bone of the system, making it extremely robust and sturdy.



### CASSETTE SIDE VIEW (MM)



**Outdoor Blinds and Awnings Australia**  
Phone: 02 8068 9293  
Email: sales@obaau.com.au  
Website: obaau.com.au  
Facebook: OutdoorBlindsAndAwningsAustralia



The wind resistance class can vary depending on version and dimension.



GET A QUOTE



Terms & Conditions Apply