

# SCREENTEX CLASSIC OUTDOOR BLINDS

ENJOY OUTDOOR LIVING ALL YEAR AROUND

Modern external shading system that is minimal in design yet robust and highly durable. Engineered with cutting-edge technology, *ScreenTex* offers the perfect balance of strength, elegance, and functionality.

The system features a sealed headbox that discreetly conceals the fabric and base bar, protecting them from the elements while maintaining a sleek, streamlined appearance. For **open-plan installations**, the *ScreenTex Classic* is an excellent choice. When retracted, it creates an obstruction-free space with no guiding mechanisms, while in use, the base bar secures neatly to floor fasteners to ensure stability and reliable performance. Designed to withstand Australian conditions while elevating modern architecture, *ScreenTex* delivers both lifestyle comfort and architectural sophistication.

# SCREENTEX CLASSIC

## OUTDOOR BLINDS

Shade control at its best



### CUSTOM MADE

Manufactured to the exact size to fit your project with a choice of premium Dulux and Interpon powder-coating colours for the frame as well as over 200 variations of premium quality of 100% solution dyed acrylic and mesh fabrics.



### EUROPEAN QUALITY

Unique combination of European design and Australian made quality. Designed and engineered in Europe, manufactured in Australia with rigorous quality control of all processes from initial customer consultation to manufacturing, installation and post-service.



### SYDNEY MANUFACTURED

Locally made to ensure quality every step of the way



### COMFORT, AESTHETICS & EASE OF USE

ScreenTex is the most premium external blinds system available across the Australian market.



### ENERGY SAVING

Manufactured with the state-of-the-art fabrics from leading providers such as Serge Ferrari and Dickson. The fabrics are able to reduce glare and heat by up to 70% which in turn eliminates the greenhouse effect, keeps your interiors feeling fresh and, depending on the colour of the fabric, block 90% to 100% of UV rays.



### AUTOMATION OPTIONS

Available automation options include hardwire to a wall switch panel or a remote control; wide range of Automation sensors such as wind or wind/sun sensors, motion sensors and rain sensors that easily integrate with existing or new Smart Home Automation Systems for convenient voice control commands.



### CONSTRUCTION

Fully enclosed powder-coated aluminium head box and bottom rail



### SYSTEM SIZE

Up to 15m<sup>2</sup> mesh/acrylic  
Up to 12m<sup>2</sup> (PVC/canvas)



### VERSATILE HEADBOX

130mm x 150mm pelmet



### FASTENERS

Marine Grade 316 Stainless Steel Bolts, Nuts & Screws



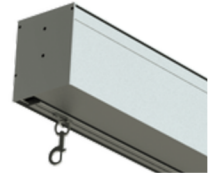
### INSTALLATION

Face, Top Fix or Recess



### OPERATION OPTIONS

Crank or Motorised



## BASE BAR AND BASE BAR FASTENERS

### DOG CLIP & SADDLES

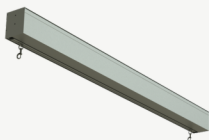


### DOG CLIP, STRAP & SADDLES



## SCREENTEX CLASSIC

### SCREENTEX CLASSIC CLOSED



### SCREENTEX CLASSIC HALF OPENED



### SCREENTEX CLASSIC FULLY OPENED



**Outdoor Blinds and Awnings Australia**  
Phone: 02 8068 9293  
Email: [sales@obaau.com.au](mailto:sales@obaau.com.au)  
Website: [obaau.com.au](http://obaau.com.au)  
Facebook: [OutdoorBlindsAndAwningsAustralia](https://www.facebook.com/OutdoorBlindsAndAwningsAustralia)



The wind resistance class can vary depending on version and dimension.



GET A QUOTE



Terms & Conditions Apply